

Home Designer® 2015

Download & Installation Instructions

Chief Architect, Inc.
6500 N. Mineral Dr.
Coeur d'Alene, Idaho 83815
www.HomeDesignerSoftware.com

Contents

Chapter 1: Installation

System Requirements	3
Downloading Home Designer	3
Installing Home Designer	4
For Home Designer Pro: Installing Your Optional Hardware Lock	8
Starting Home Designer	8
Migrating Library Catalogs	9
Program Updates	10
Installing on Multiple Computers	10
Uninstalling Home Designer	11

Chapter 2: Additional Resources

Tool Tips and the Status Bar	12
Help Contents and Index	12
Home Designer Tutorials	12
Reference Manual & User's Guide PDFs	12
Tutorial Videos	13
Home Designer Web Site	13
HomeTalk User Forum	13

Installation

This chapter will walk you through installing your Home Designer software.

Chapter Contents

- System Requirements
- Downloading Home Designer
- Installing Home Designer
- Installing Your Optional Hardware Lock
- Starting Home Designer
- Migrating Library Catalogs
- Program Updates
- Installing on Multiple Computers
- Uninstalling Home Designer

System Requirements

In order to install and run Home Designer, your computer system must meet the following minimum requirements:

- Windows® 8/7/Vista; Mac OS X® v10.8 (Mountain Lion) or newer
- 2.4 GHz processor
- 2 GB of memory (32 bit); 4 GB of memory (64 bit)
- 5 GB of available hard disk space
- 512 MB dedicated video card or integrated graphics with 2012 or newer drivers
- Recommended minimum monitor resolution: 1152 x 864
- High speed Internet for registration, video access, content downloads
- DVD drive (if software purchased on DVD)

For more information about system recommendations, visit our Web site at www.HomeDesignerSoftware.com.

Downloading Home Designer

To download and install Home Designer 2015, begin by logging in to your online Home Designer account at www.HomeDesignerSoftware.com.

Browse to the Digital Locker page, select the version that you would like, click the Download button, and save the file to your local hard drive. Select an easy to find **Save in** location on your computer, such as your Documents folder or Windows Desktop, then click **Save**.

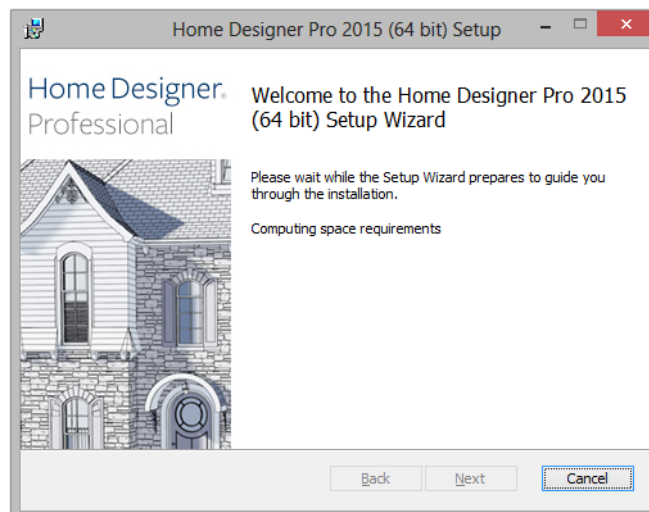
Installing Home Designer

When the installer file is completely downloaded, browse to its save location and double-click on it to launch the program installer.

If you have a Home Designer Program DVD, insert it into your DVD drive:

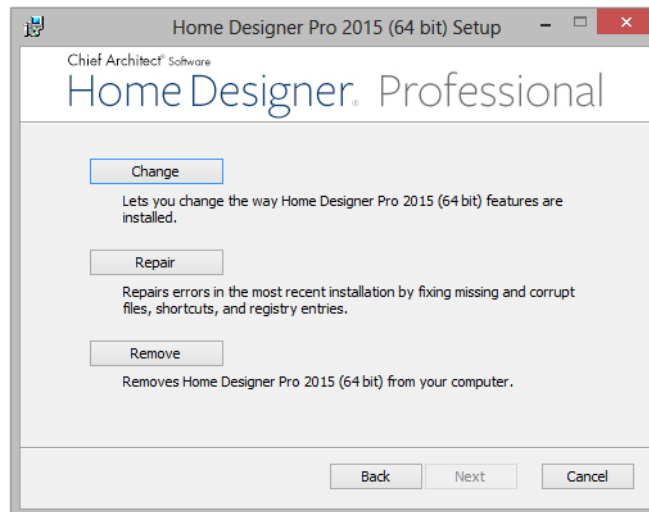
- In Windows, the Setup Wizard will launch automatically. If it does not, press the Windows key on your keyboard, then select Computer. Right-click on your DVD drive and select **Open** from the menu, then double-click on the file with your program's name and the **.msi** file extension.
- On a Mac, the DVD will open in a Finder window automatically. If it does not, right-click on the disk icon on your desktop and select **Open** from the menu. Then, double-click on the file with the **.pkg** file extension.

Setup Wizard Welcome



1. Depending on whether or not you have installed the program on this computer before, the text in this window may vary. Click **Next** to continue.

Setup Maintenance



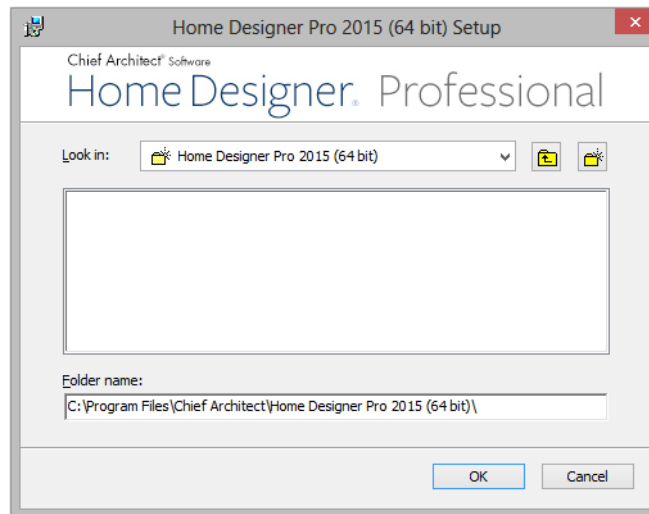
2. If you have installed the program before, this window will display, allowing you to reinstall or uninstall the program. If you are installing the program for the first time, this window will not display.

License Agreement



3. Read the License Agreement carefully. You must check the box beside **I accept the terms and conditions of this license agreement** before installing. See “End User License Agreement” on page 457 of the User’s Guide.
 - Click the **Advanced** button if you’d like to specify a non-default installation location or exclude supplementary content from being installed.
 - Click **Install** to begin installing the software. The Setup Wizard will begin copying files to your hard disk. This may take a few minutes.

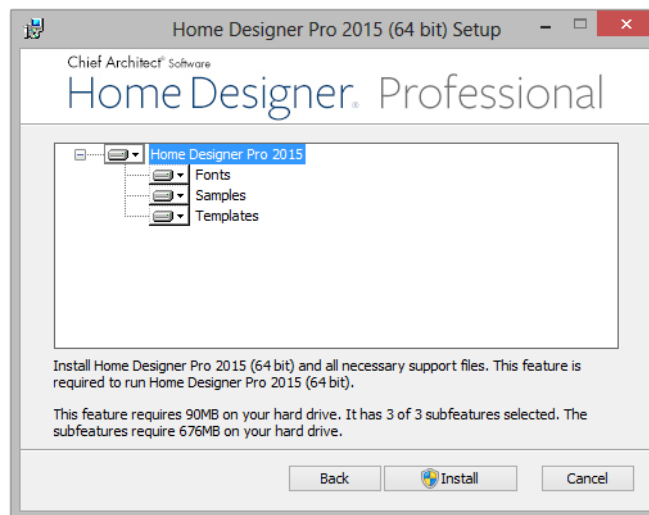
Choose Destination Location



- This window appears only if you click the **Advanced** button, and then the **Change** button, in the previous windows. Choose the destination folder for the program. By default, the program installs in the C:\Program Files\Chief Architect directory, in a folder with the same name as your program version.
 - If you prefer a different location, click drop-down arrow to the right of the **Look in:** location and navigate to the desired location on your hard drive.
 - You can also type the full pathname of the installation directory in the **Folder name:** field.
 - Click **OK** to proceed to the next window.

Note: Regardless of the location that you specify here, the program's library content will be installed in your computer's ProgramData folder.

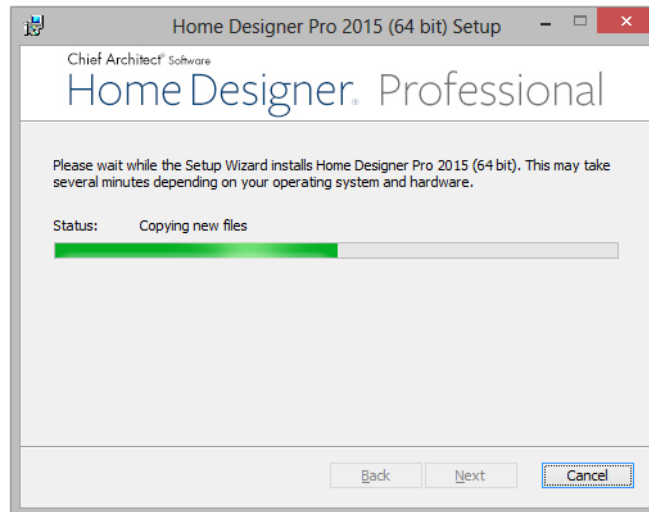
Choose Items to Install



- You can use this window to specify what features you wish to install.
 - Click on a line item to select it. Information about its contents and hard drive space requirements displays beneath the list of features.
 - Click the drop-down arrow beside a line item to specify how it is installed. By default, **Entire feature will be installed** is selected for all line items.

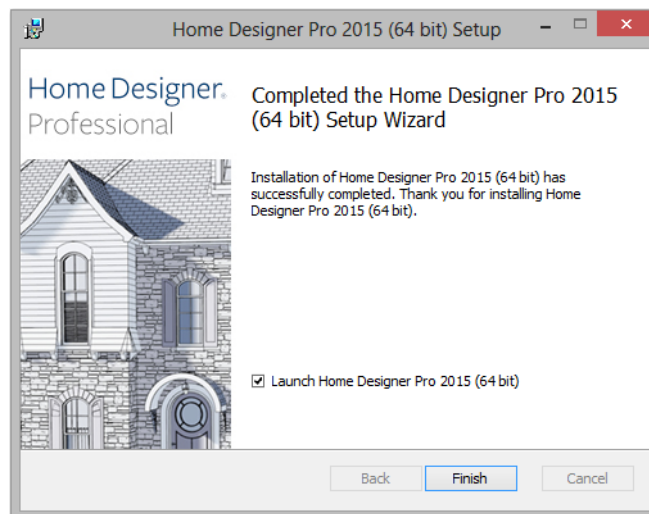
- Choose **Entire feature will be unavailable** to prevent a selected subfeature from being installed. When this option is selected, a red X will display beside the line item's drop-down arrow. The top level feature cannot be excluded from installing. If you decide to not proceed with the program installation, click the Cancel button.
- Click **Install** to install the program and supplemental content as specified.

Install



6. The Setup Wizard will begin copying files to your hard disk after a few moments and a green progress bar in this window will show the status of this process. This may take a few minutes.

Setup Wizard Complete



7. When all files have been copied, this dialog will display. Click **Finish** to launch Home Designer.

For Home Designer Pro: Installing Your Optional Hardware Lock

Hardware Lock Security is an alternative to the standard, internet based license security used by Home Designer Pro licenses and can be used on Windows operating systems only. If you do not have Hardware Lock Security for your Home Designer Pro license, skip this section and proceed to Starting Home Designer section of the instructions.


USB Hardware Locks



Your Hardware Lock

If you do have Hardware Lock Security, the hardware lock is your key for operating Home Designer Pro on supported Windows operating systems. You will not be able to operate Home Designer Pro unless this lock is attached to the computer you wish to launch the program on, so please take care of it.

Before Installing Your Lock

 Do not plug the hardware lock into your computer until you have completed the preceding Home Designer installation instructions.

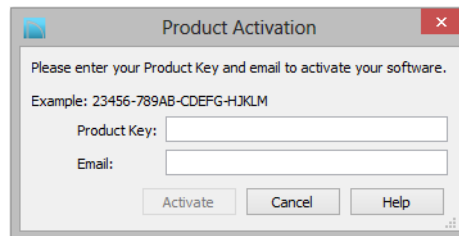
Installing Your Lock

1. Attach your lock to any available USB port.
2. Your Windows operating system should detect the lock and install it automatically.
3. Launch Home Designer.

Starting Home Designer

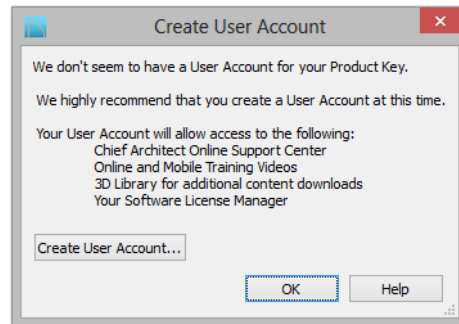
You can use the Start menu or the shortcut on your desktop to start Home Designer. When you launch the program for the first time, the **Product Activation** dialog will open.

This dialog will also open if you have previously deactivated your license on the current computer, or if you are converting a Trial Version installation into the full software version.



- Enter your **Product Key**, which is located in the account information from your download or on a sticker inside your DVD case.
- Enter your **Email** address.
- Click the **Activate** button to launch the program. Not available unless a valid Product Key has been entered.

If you do not have a User Account on our web site, the **Create User Account** dialog will open next.



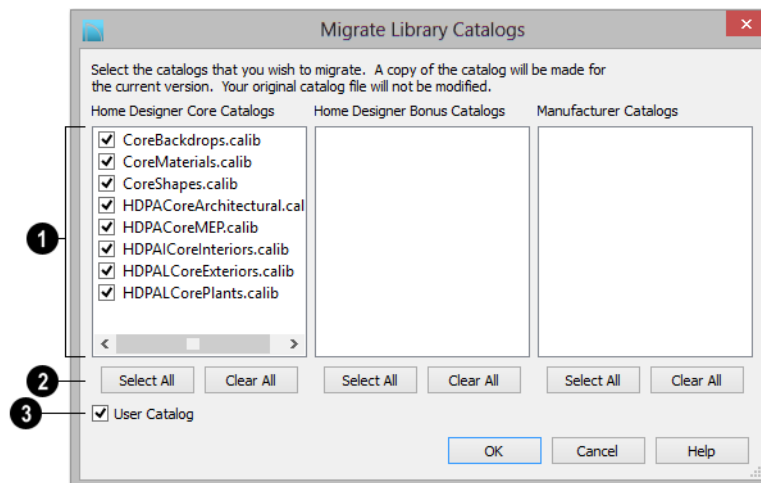
So that you can take full advantage of our online resources, we recommend that you click the **Create User Account** button and take a moment to create a User Account on our web site, www.HomeDesignerSoftware.com.

Migrating Library Catalogs

If you have Home Designer 2014 installed on your Windows® computer, the **Migrate Library Catalogs** dialog will display after you activate the license, allowing you to migrate library content for use in Home Designer 2015. See “Library Content” on page 777 of the Reference Manual.

Because the previous version of Home Designer did not have a native Mac version, the Migrate Library Catalogs and Legacy Library Conversion dialogs are not available in the Mac version of the software.

Migrate Library Catalogs Dialog



- 1 A list of all **Home Designer Core**, **Home Designer Bonus**, and **Manufacturer Catalogs** installed in your version 2014 library display here.
 - Uncheck the box beside a library catalog’s name to prevent it from migrating into the version 2015 Library Browser.
- 2 **Select All/Clear All** -
 - Click the **Select All** button below a list to migrate all catalogs in that list into the version 2015 library.
 - Click the **Clear All** button below a list to migrate none of the catalogs in that list into the version 2015 library.
- 3 Uncheck **User Catalog** if you do not want to migrate your custom library content into version 2015. When this is checked, your version 2014 custom library content will be migrated and placed in your User Catalog.

Legacy Library Conversion

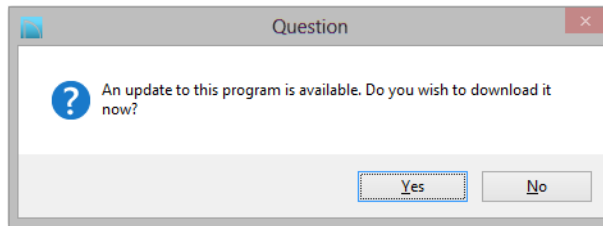
If you upgraded to Version 2015 from a Home Designer version between and have custom library content from that version on your Windows® computer, the **Legacy Library Conversion** dialog will display.

To convert this custom content for use in Version 2015, click **Yes**.

Program Updates

From time to time, Chief Architect releases Home Designer program updates that are available for download free of charge from the Home Designer web site, www.HomeDesignerSoftware.com.

When a program update is available, this dialog will display when the program is opened:



- Click **Yes** to open your default Internet browser to the **Program Updates** section of the Home Designer Web site.
- Click **No** to launch Home Designer.

At any time, you can select **Help> Download Program Updates** from the Home Designer menu to launch your default Web browser to the [Program Updates](#) section of the Home Designer Web site.


Program updates are not patches: when an update is installed, the previous version is uninstalled and then the new version is installed. Library content, Preference settings, and information saved in the program's Data folder are not affected by program updates.

If you prefer that the program not check for program updates every time it launches, you can disable this feature in the **Preferences** dialog. See "General Panel" on page 45 of the Reference Manual.

Installing on Multiple Computers

A license of Home Designer can only be active on one computer at any given time. If you have been running the software on one computer and wish to run it on a different computer, or if you wish to rename your computer, you must deactivate your license first.

For details, please refer to the **End User License Agreement**, found in both the program installer and the User's Guide .pdf.

 **An active Internet connection is required to deactivate a Home Designer license.**

To deactivate a Home Designer license

1. Launch Home Designer on the computer where the license is active.
2. Select **Help> Deactivate License** from the menu.
3. A message will confirm that you wish to deactivate the license. Click **Yes**.
4. After a pause, a second message will inform you that the license has been deactivated.

License activations can also be deactivated in your User Account on our web site, www.HomeDesignerSoftware.com

To manage license activations online

1. Log in to your User Account on our web site, www.HomeDesignerSoftware.com.
2. Browse to your **Digital Locker: Software Downloads and Product Keys** page.
3. Click the link to **Manage your Active Licenses**.
4. Click the **Deactivate** button to deactivate your license on the computer where it is currently active, making it available for use on another computer.

If you are using hardware lock security, you do not need to deactivate your license. Instead, attach the lock to the computer you wish to use before launching Home Designer. See “Your Hardware Lock” on page 8.

Uninstalling Home Designer

There are two ways that Home Designer can be removed from a Windows computer: from the Control Panel and using the Setup Wizard on the program disk. Please note that if you do not have an active Internet connection, your license will not become deactivated.

To remove the program using the Control Panel

1. Open the Windows Control Panel.
2. Double-click Programs.
3. Find Home Designer and click **Uninstall**.

To remove the program using the Setup Wizard

1. Launch your downloaded program installer or place the disc in the DVD drive and select **Install** Home Designer from the Home Designer startup window.
2. On the Setup Maintenance page, select **Uninstall** and click **Next**. A message will display, asking if you would like to remove the selected application and its components.
3. Click **Yes** to remove Home Designer.

When Home Designer is uninstalled, neither the Home Designer Data folder nor the library content is removed from the system. See “Chief Architect Data” on page 18 and “Library Content” on page 777.



If an emergency forces you to reformat your hard drive, reinstall your operating system, or resort to a system restore point, be aware that none of these actions result in a normal program uninstallation or license deactivation.

Additional Resources

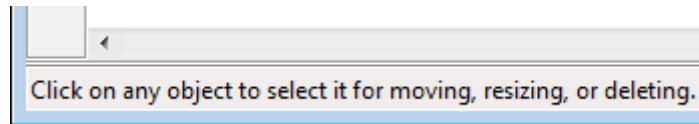
There are many forms of help in Home Designer, including: Tool Tips, the Status Bar, online Help, written tutorials, and product documentation in PDF format. Still more valuable information is available on Home Designer's web site, www.HomeDesignerSoftware.com.

- Tool Tips and the Status Bar
- Help Contents and Index
- Home Designer Tutorials
- Reference Manual & User's Guide PDFs
- Tutorial Videos
- Home Designer Web Site
- HomeTalk User Forum

Tool Tips and the Status Bar

When you move your mouse pointer over a toolbar button or menu item, a Tool Tip displays, offering a brief description of the tool.

More information displays in the Status Bar at the bottom of the program window.



Help Contents and Index



Home Designer's Help Contents and Index is a browsable, searchable resource that provides a description of the tools and dialogs in the program. It can be accessed in several ways:

- Select **Help> Launch Help** from the menu.
- Place your pointer over any menu item, toolbar button, or selected object. When you see a Tool Tip in the Status Bar, press the **F1** key.
- Click the **Help** button in any dialog.

Home Designer Tutorials

In addition to a description of each menu item, toolbar button, and dialog in the program, Home Designer includes a collection of written tutorials that describe how to create a plan in the program.

These tutorials can be quickly accessed on the Contents tab of Home Designer Help or by selecting **Help> View User's Guide** from the program menu.

Reference Manual & User's Guide PDFs

The complete contents of the Home Designer Help is available in PDF format. Select **Help> View Reference Manual** or **Help> View User's Guide** to view either document in Adobe Reader. PDFs can be read on-screen, or you can print any pages you wish.

Tutorial Videos

Home Designer users have access to a collection of online training videos that show you how to perform many tasks in the program. Select **Help> View Online Help Videos** to launch your Internet browser to [_video.homedesigner.chiefarchitect.com/videos](http://video.homedesigner.chiefarchitect.com/videos).

Some Home Designer Help pages also feature links to Tutorial Videos that are relevant to the information on the page.

 Click to view related online training videos

Home Designer Web Site

Our web site, www.HomeDesignerSoftware.com, has answers to many frequently asked technical support questions. The online Knowledge Base contains a variety of articles describing how to resolve common technical problems and achieve specific design goals. New on-line tutorials are added regularly, and we invite you to visit our web site whenever you like.

HomeTalk User Forum

Other Home Designer users have a wealth of knowledge they are willing to share. You can link to the HomeTalk user forum by selecting **Help> HomeTalk** from the Home Designer program menu or by going directly to HomeTalk.HomeDesignerSoftware.com.

Chief Architect strives to make our documentation as helpful as possible for all of our customers. Please send any questions, comments, or feedback to Documentation@HomeDesignerSoftware.com.